

LAKESIDE
LIFT

Demco

**LIL' DOCKSIDE
LIFTER**

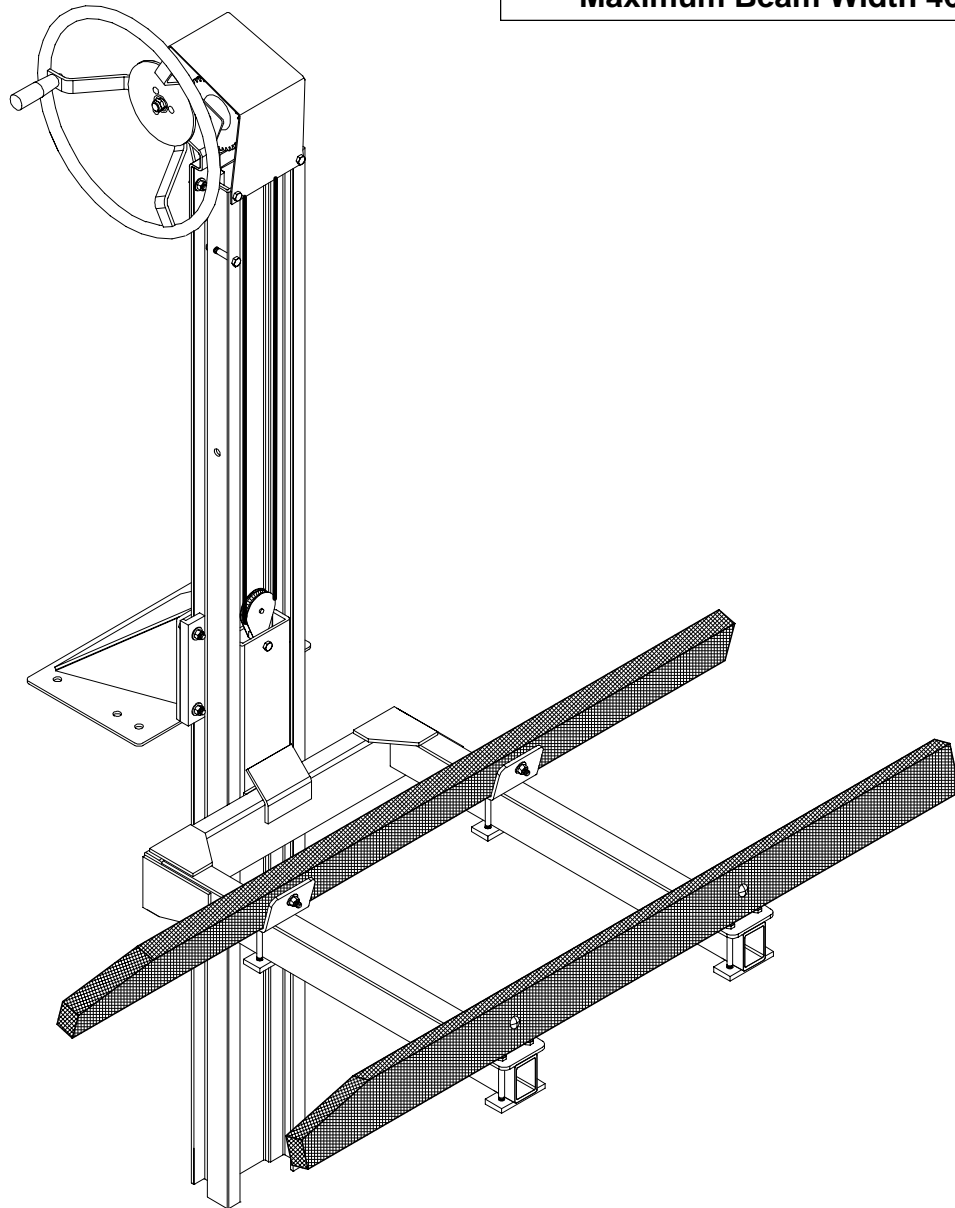
9/06
ML20003, REV.9

MODEL NO.
TL560PWC
TL570PWC
TL560PWCE
TL570PWCE

ASSEMBLY
INSTALLATION
REPLACEMENT PARTS

READ complete manual CAREFULLY
BEFORE attempting operation

Lift Capacity 750 lbs.
Maximum Beam Width 46"



LAKESIDE LIFT • Dethmers Mfg. Co. • 4010 320th St. • P.O. Box 189 • Boyden, IA. 51234

PH: (712) 725-2311 or (712) 725-2302 • Toll Free: 1-800-543-3626 • Fax: (712) 725-2380

www.demco-products.com

INTRODUCTION

Thank You for purchasing a Lakeside Lift by Demco. We feel you have made a wise choice and hope you are completely satisfied with your new hoist. To bring you the boater efficient equipment, our engineers work closely with boaters and marina owners in research and development of Lakeside Lift products.

Your new boat hoist is durable and reliable. If taken care of properly it will give you years of trouble free service.

Make sure that all pieces are assembled in proper sequence or complications may result. It is a good idea to read through the entire instruction manual first and then begin assembly. Be certain you know exactly what's going to happen during each step. There are movable parts and therefore we emphasize **CAUTION** should be exercised to ensure your safety at all times.

For best results the hoist must be assembled on a reasonably level spot. We recommend that you have help when assembling your hoist.

GENERAL INFORMATION

1. Unless otherwise specified, high-strength SAE 5 (grade 5)(3 radial-line head markings) hex head bolts are used throughout assembly of this piece of equipment. See page 8.
2. Whenever terms "LEFT "and "RIGHT" are used in this manual it means from a position that boat enters hoist and facing forward.
3. When placing a parts order, refer to this manual for proper part numbers and place order by PART NO. and DESCRIPTION.

TABLE OF CONTENTS

Safety Information	Page 3-8
Operating Instructions and Periodic Maintenance	Page 9
Parts List Breakdown	Page 10
TL560PWC & TL570PWC Breakdown & Instructions	Pages 10-12
TL560PWCE & TL570PWCE Breakdown & Instructions	Pages 10-13
Installation Instructions and Optional Support Leg	Page 14

SAFETY

TAKE NOTE! THIS SAFETY ALERT SYMBOL FOUND THROUGHOUT THIS MANUAL IS USED TO CALL YOUR ATTENTION TO INSTRUCTIONS INVOLVING YOUR PERSONAL SAFETY AND SAFETY OF OTHERS. FAILURE TO FOLLOW THESE INSTRUCTIONS CAN RESULT IN INJURY OR DEATH.!



THIS SYMBOL MEANS

ATTENTION

BECOME ALERT

YOUR SAFETY IS INVOLVED!

SIGNAL WORDS

Note use of following signal words **DANGER**, **WARNING**, and **CAUTION** with safety messages. The appropriate signal word for each has been selected using the following guidelines:

DANGER:

Indicates an imminently hazardous situation that, if not avoided, will result in death or serious injury. This signal word is to be limited to the most extreme situations typically for machine components which, for functional purposes, cannot be guarded.

WARNING:

Indicates a potentially hazardous situation that, if not avoided, could result in death or serious injury, and includes hazards that are exposed when guards are removed. It may also be used to alert against unsafe practices.

CAUTION:

Indicates a potentially hazardous situation that, if not avoided, may result in minor or moderate injury. It may also be used to alert against unsafe practices.

If you have questions not answered in this manual, require additional copies, or if your manual is damaged, please contact your dealer or Dethmers Mfg. Co., P.O. Box 189, 4010 320th Street, Boyden, IA 51234
ph: (712) 725-2311 or (712) 725-2302 Toll Free: 1-800-543-3626 Fax: (712) 725-2380

<http://www.demco-products.com>



SAFETY...YOU CAN LIVE WITH IT



EQUIPMENT SAFETY GUIDELINES

Every year many accidents occur which could have been avoided by a few seconds of thought and a more careful approach to handling equipment. You, the operator, can avoid many accidents by observing the following precautions in this section. To avoid personal injury, study following precautions and insist those working with you, or you yourself, follow them.

In order to provide a better view, certain illustrations in this manual may show an assembly with a safety shield removed. However, equipment should never be operated in this condition. Keep all shields in place. If shield removal becomes necessary for repairs, disconnect power. Replace shield prior to use.

Replace any caution, warning, danger or instruction safety decal that is not readable or is missing. Location of such decals is indicated in this booklet.

Do not attempt to operate this equipment under the influence of alcohol or drugs.

Review safety instructions with all users.

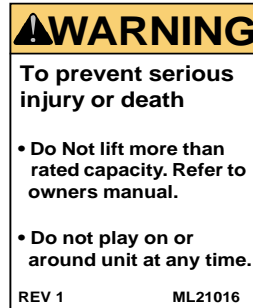
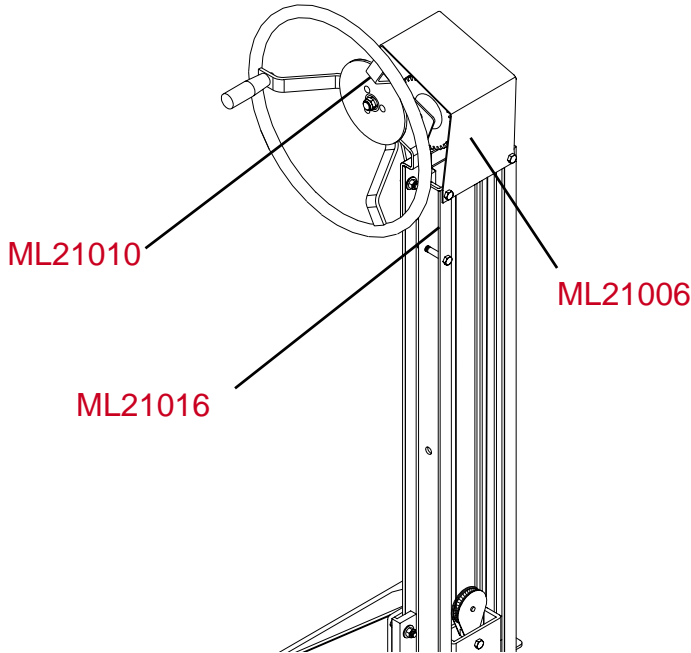
Operator should be a responsible adult. **DO NOT ALLOW PERSONS TO OPERATE OR ASSEMBLE THIS UNIT UNTIL THEY HAVE DEVELOPED A THOROUGH UNDERSTANDING OF SAFETY PRECAUTIONS AND HOW IT WORKS.**

Never exceed the limits of a lift. If its ability to do a job, or to do so safely is in question - **DON'T TRY IT.**



SAFETY SIGN LOCATIONS

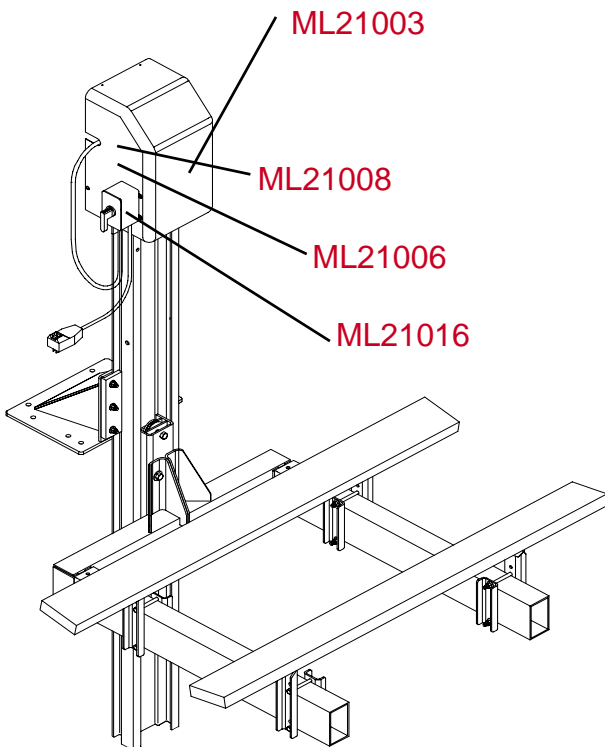
Types of safety sign and locations on equipment are shown in illustration below. Good safety requires that you familiarize yourself with various safety signs, type of warning, and area or particular function related to that area, that requires your SAFETY AWARENESS.



ML21016



ML21010



ML21008



ML21006



ML21003



SAFETY SIGN CARE

- Keep safety signs clean and legible at all times.
- Replace safety signs that are missing or have become illegible.
- Replacement parts that displayed a safety sign should also display current sign.
- Safety signs are available from your distributor, dealer parts department, or factory.

How to install safety signs:

- Be sure that installation area is clean and dry.
- Decide on exact position before you remove backing paper.
- Remove smallest portion of split backing paper.
- Align decal over specified area and carefully press small portion with exposed sticky backing in place.
- Slowly peel back remaining paper and carefully smooth remaining portion of decal into place.
- Small air pockets can be pierced with a pin and smoothed out using the piece of decal backing paper.



REMEMBER

Your best assurance against accidents is a careful and responsible operator. If there is any portion of this manual or function you do not understand, contact your local authorized dealer or manufacturer.



BEFORE OPERATION:

- Carefully study and understand this manual.
- Do not wear loose-fitting clothing which may catch in moving parts.
- Always wear protective clothing.
- Give lift a visual inspection for any loose bolts, worn parts, or cracked welds, and make necessary repairs. Follow maintenance safety instructions included in this manual.
- Be sure there are no tools lying on or in equipment
- Do not use lift until you are sure that area is clear, especially around children and animals.
- Don't hurry learning process or take lift for granted. Ease into it and become familiar with your new lift.
- Practice operation of your lift and its attachments. Completely familiarize yourself and other operators with its operation before using.

- Do not clean, lubricate, or adjust your equipment while it is moving.
- Be especially observant of operating area watch for rocks, or other hidden hazards. Always inspect area prior to operation.
- Never leave running equipment unattended.
- Watch for overhead lines. Contact with overhead power lines can cause serious injury. Assure equipment is properly grounded and ground fault interrupter is in place to avoid electrical shock.



PERFORMING MAINTENANCE

- Good maintenance is your responsibility. Poor maintenance is an invitation to trouble.
- Always use proper tools or equipment for job at hand.
- Use extreme caution when making adjustments.
- Follow torque chart in this manual when tightening bolts and nuts.
- If lift is equipped with cable periodically inspect cable for nicks and fraying, replace if necessary
- Cable may have sharp wires from nicks or frays which may cut hands or catch clothing, use care when handling.
- Replace **all shields** and **guards** after servicing and before moving.
- After servicing, be sure all tools, parts and service equipment are removed.
- Do not allow grease or oil to build up on any step or platform.
- When replacing bolts, refer to owners manual.
- Refer to bolt torque chart for head identification marking.
- Where replacement parts are necessary for periodic maintenance and servicing, genuine factory replacement parts must be used to restore your equipment to original specifications. Manufacturer will not claim responsibility for use of unapproved parts or accessories and other damages as a result of their use.
- If equipment has been altered in any way from original design, manufacturer does not accept any liability for injury or warranty.
- A fire extinguisher and first aid kit should be kept readily accessible while performing maintenance on this equipment
- Do not walk or work under raised components or attachments unless securely positioned and blocked.
- Keep all bystanders, pets, clear of work area.
- As a precaution, always recheck hardware on equipment every 30-60 days during operation. Correct all problems. Follow maintenance safety procedures.

BOLT TORQUE

TORQUE DATA FOR STANDARD NUTS, BOLTS, AND CAPSCREWS.

Tighten all bolts to torques specified in chart unless otherwise noted. Check tightness of bolts periodically, using bolt chart as guide. Replace hardware with same grade bolt.

NOTE: Unless otherwise specified, high-strength Grade 5 hex bolts are used throughout assembly of equipment.

Bolt Torque for Standard bolts *



Torque Specifications

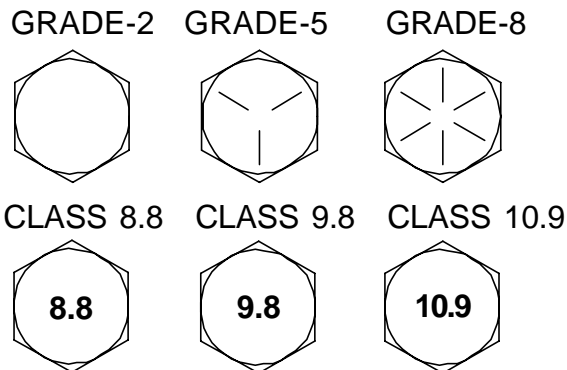
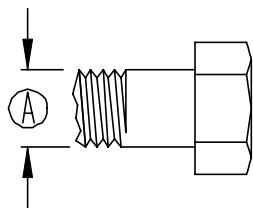
"A"	GRADE 2		GRADE 5		GRADE 8	
	lb-ft	(N.m)	lb-ft	(N.m)	lb-ft	(N.m)
1/4"	6	(8)	9	(12)	12	(16)
5/16"	10	(13)	18	(25)	25	(35)
3/8"	20	(27)	30	(40)	45	(60)
7/16"	30	(40)	50	(70)	80	(110)
1/2"	45	(60)	75	(100)	115	(155)
9/16"	70	(95)	115	(155)	165	(220)
5/8"	95	(130)	150	(200)	225	(300)
3/4"	165	(225)	290	(390)	400	(540)
7/8"	170	(230)	420	(570)	650	(880)
1"	225	(300)	630	(850)	970	(1310)

Bolt Torque for Metric bolts *

"A"	CLASS 8.8		CLASS 9.8		CLASS 10.9	
	lb-ft	(N.m)	lb-ft	(N.m)	lb-ft	(N.m)
6	9	(13)	10	(14)	13	(17)
7	15	(21)	18	(24)	21	(29)
8	23	(31)	25	(34)	31	(42)
10	45	(61)	50	(68)	61	(83)
12	78	(106)	88	(118)	106	(144)
14	125	(169)	140	(189)	170	(230)
16	194	(263)	216	(293)	263	(357)
18	268	(363)	--	--	364	(493)
20	378	(513)	--	--	515	(689)
22	516	(699)	--	--	702	(952)
24	654	(886)	--	--	890	(1206)

Torque figures indicated are valid for non-greased or non-oiled threads and heads unless otherwise specified. Therefore, do not grease or oil bolts or capscrews unless otherwise specified in this manual. When using locking elements, increase torque values by 5%.

* GRADE or CLASS value for bolts and capscrews are identified by their head markings.



OPERATING INSTRUCTIONS

1. To operate Hand Wheel winch for the hoist, turn the handwheel clockwise to raise the cradle and turn the handwheel counter-clockwise to lower the cradle.
2. To raise the hoist using the electric winch, turn the switch to the raise position and to lower the hoist turn the switch to the lower position.



Warning: To Prevent Personal Injury

Only raise the cradle until it touches the upper stop. DO NOT raise hoist too high or the hoist may be damaged or cables may break.

Also DO NOT lower hoist too low or cable may begin to wrap around the top side of the winch and may cause damage to cables.

All persons should be off of the PWC before operating hoist or this could increase your gross weight over the hoist capacity and cause failure or injury.

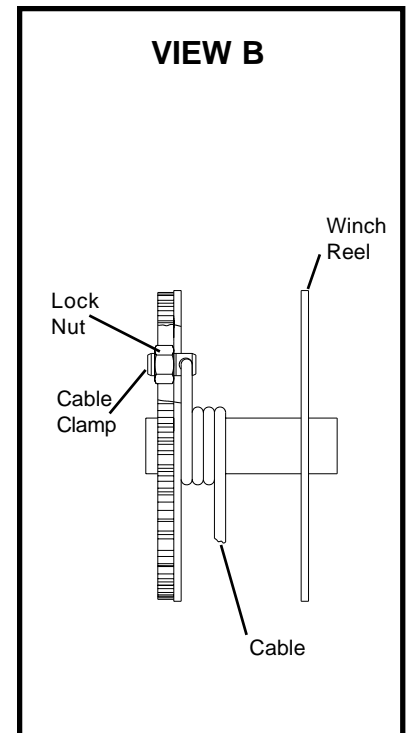
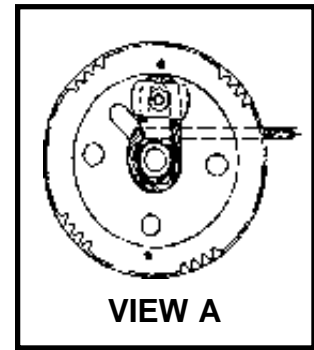
3. To remove your PWC from the hoist, turn the handwheel counterclockwise to lower the cradle as far as necessary to release the PWC.
4. When entering the hoist, approach slowly until the PWC is on the center of the bunk mount boards. Then proceed to raise the cradle by turning the handwheel clockwise.
5. When the hoist is in the up position a padlock can be placed in the 1/2" hole located on Upright Post.

PERIODIC MAINTENANCE

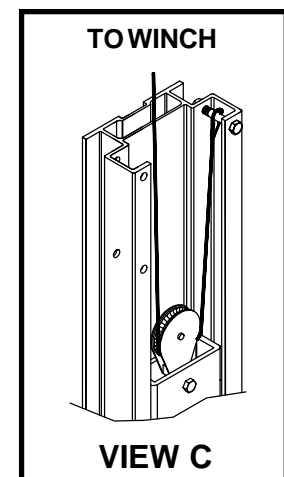
1. Inspect the lift cable for worn, frayed or rusted areas periodically and replace as needed.
2. Tighten all bolts at the beginning and the end of each boating season.
3. Grease all zerks and the worm gear drive of the electric winch periodically with a high quality all purpose waterproof grease.

TL560PWC, TL570PWC, TL560PWCE and TL570PWCE PARTS LIST

TL560PWC TL570PWC		TL560PWCE TL570PWCE			
REF. NO.	PART NO.	QTY	PART NO.	QTY	DESCRIPTION
1.	06998	4	06998	4	1/2"-13 UNC x 2 1/2" Hex Head Bolt - SS
2.	04638	12	04638	12	1/2" Flatwasher - SS
3.	06324	4	06324	4	1/2"-13 UNC Hex Nut - SS
4.	08092	8	08092	8	3/8"-16 UNC x 4-1/2" Hex Head Bolt - SS
5.	09431	3	09431	1	3/8"-16 UNC x 2-3/4" Hex Head Bolt - SS
6.	08109	4	08109	4	3/8"-16 UNC x 2-1/2" Carriage Bolt - SS
7.	06695	1	06695	1	3/8"-16 UNC x 2 Hex Head Bolt - SS
8.	06490	4	06490	4	3/8"-16 UNC x 1-3/4 Hex Head Bolt - SS
9.	04631	3	04631	3	3/8"-16 UNC x 1-1/4" Hex Head Bolt - SS
10.	04630	5	04630	5	3/8"-16 UNC x 1" Hex Head Bolt - SS
11.	04633	5	04633	3	3/8" Flatwasher - SS
12.	06328	20	06328	20	3/8" Lockwasher - SS
13.	06491	20	06491	20	3/8"-16 UNC Hex Nut - SS
14.	06699	1	---	-	3/16" x 144" Cable with Thimble TL560PWC
*	08000	1	---	-	3/16" x 144" Cable with Thimble 9612001-SS
-	06781	1	---	-	3/16" x 192" Cable with Thimble TL570PWC
*	08001	1	---	-	3/16" x 192" Cable with Thimble 9612002 - SS
-	---	1	06916	1	3/16" x 75" Cable with Thimble TL560PWCE
*	---	1	08002	1	3/16" x 75" Cable with Thimble 9612003 - SS
-	---	-	06917	1	3/16" x 99" Cable with Thimble TL570PWCE
*	---	-	06999	1	3/16" x 99" Cable with Thimble 9612004 - SS
15.	10319	1	---	-	Fixed Eye Sheave Block for 1/4" Cable
16.	06692	4	06692	4	Cradle Roller
17.	04632	8	04632	6	3/8"-16 UNC Nylon Insert Lock Nut -SS
18.	06782	2	06782	2	Roller Shaft
19.	10428	1	---	-	Manual Winch
-	5481	-	5481	-	Winch Parts Bad
20.	08154	1	---	-	Aluminum Winch Wheel Assy.
21.	08157	1	---	-	Revolving Handle f/ Tower Lift Handwheel
22.	07451	1	---	-	10 mm - 1.5 Hex Nut
23.	10335	1	---	-	Winch Bracket
24.	10334	1	---	-	Winch Cover
25.	06675	1	06675	1	Upright Post TL560PWC - 5' Lift Height
-	06783	1	06783	1	Upright Post TL570PWC - 7' Lift Height
26.	06678	1	06678	1	Cradle
27.	06676	1	06676	1	Dock Plate
28.	06689	2	06689	2	Dock Plate Back-Up Plate
29.	08107	2	08107	2	Carpeted Cradle Board
30.	08106	4	08106	4	Cradle Board Mounting Angle
31.	06679	4	06679	4	Board Mounting Plate
32.	---	-	06891	1	Electric Winch Bracket
33.	---	-	5456	1	Electric Winch Assembly w/ Switch Assembly
34.	---	-	5457	1	Electric Winch Cover Assembly
35.	---	-	06120	1	3/16" Cable Clamp
*	---	-	06793	-	3/16" Cable Clamp SS
36.	---	-	04208	2	#10-24UNC x 3/4"Slotted Round Head Screw
37.	---	-	04940	2	#10 Washer
38.	---	-	01986	2	#10-24UNC Hex Nut
39.	---	-	---	2	#8 Screw (furnished with Winch Cover Assy.)
40.	---	-	06992	1	GFCI Right Angle Plug
-	ML21010	1	----	-	Replacement Circle "Lil' Lifter" Decal
-	ML21016	1	ML21016	1	Replacement Warning Decal
-	----	-	ML21008	1	Replacement Warning Decal
-	ML21006	1	ML21006	1	Replacement WarningDecal
-	----	-	ML21003	1	Replacement Lil' Lifter Large Decal
* 5533 1 5533 1 Sea Lift Anode Kit (optional)					
10.	04630	1	04630	1	3/8"-16 UNC x 1" Hex Head Bolt - SS
12.	06328	1	06328	1	3/8" Lockwasher - SS
13.	06491	1	06491	1	3/8"-16 UNC Hex Nut - SS
42.	06997	2	06997	2	Small Zinc Anode Assy.
43.	08004	2	08004	2	Anode Mounting



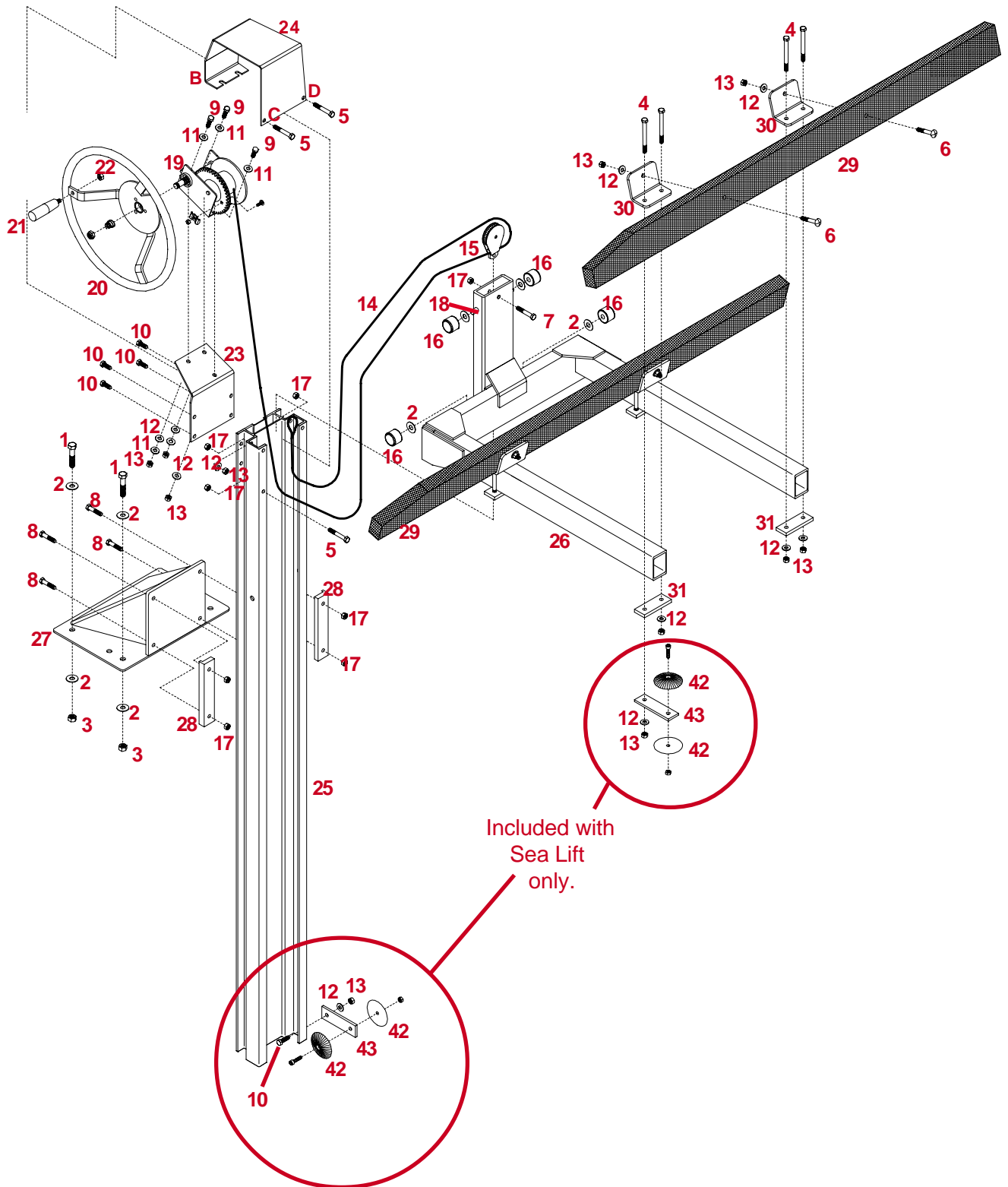
Put cable through & pinch between sideplate by tightening lock nut on backside



Please order replacement parts by PART NO. and DESCRIPTION

* Items used with optional Sea Lift Hoist.

TL560PWC and TL570PWC



TOWER LIFT ASSEMBLY INSTRUCTIONS

1. Slide the four Cradle Rollers (#16) with 1/2" SS Adjustment Shims (#2) onto the Roller Shaft (#18).

NOTE: The Adjustment shims should be used to maintain proper fit of the cradle assembly in the upright post.

2. If the rollers of the cradle fit too tight in the upright post, remove the adjustment shims one side of the cradle at a time until proper adjustment of a total gap of 1/16" to 1/8" between ends of the rollers and the sides of the upright is achieved.
3. Bolt the Sheave Block (#15)(manual winch only) into the vertical tube of the Cradle (#26) using one 3/8" x 2" SS bolt (#7), and 3/8" SS nylon locknut (#17).
4. Lower the Cradle Assembly (#26) into the top of the Upright Lift Post (#25). **Note:** Go to step #14 on page #13 if you have the Electric Winch.
5. Attach Winch Mount Bracket (#23) to Upright Lift Post using four 3/8" x 1" SS hex head bolts (#10), 3/8" SS lockwashers (#12), and 3/8" SS hex nuts (#13).
6. Bolt the Winch (#19) to the Winch Mount Bracket (#23) using three 3/8" x 1-1/4" SS bolts (#9), five 3/8"SS flatwashers (#11), three 3/8" SS lockwashers (#12), and three SS hex nuts (#13).

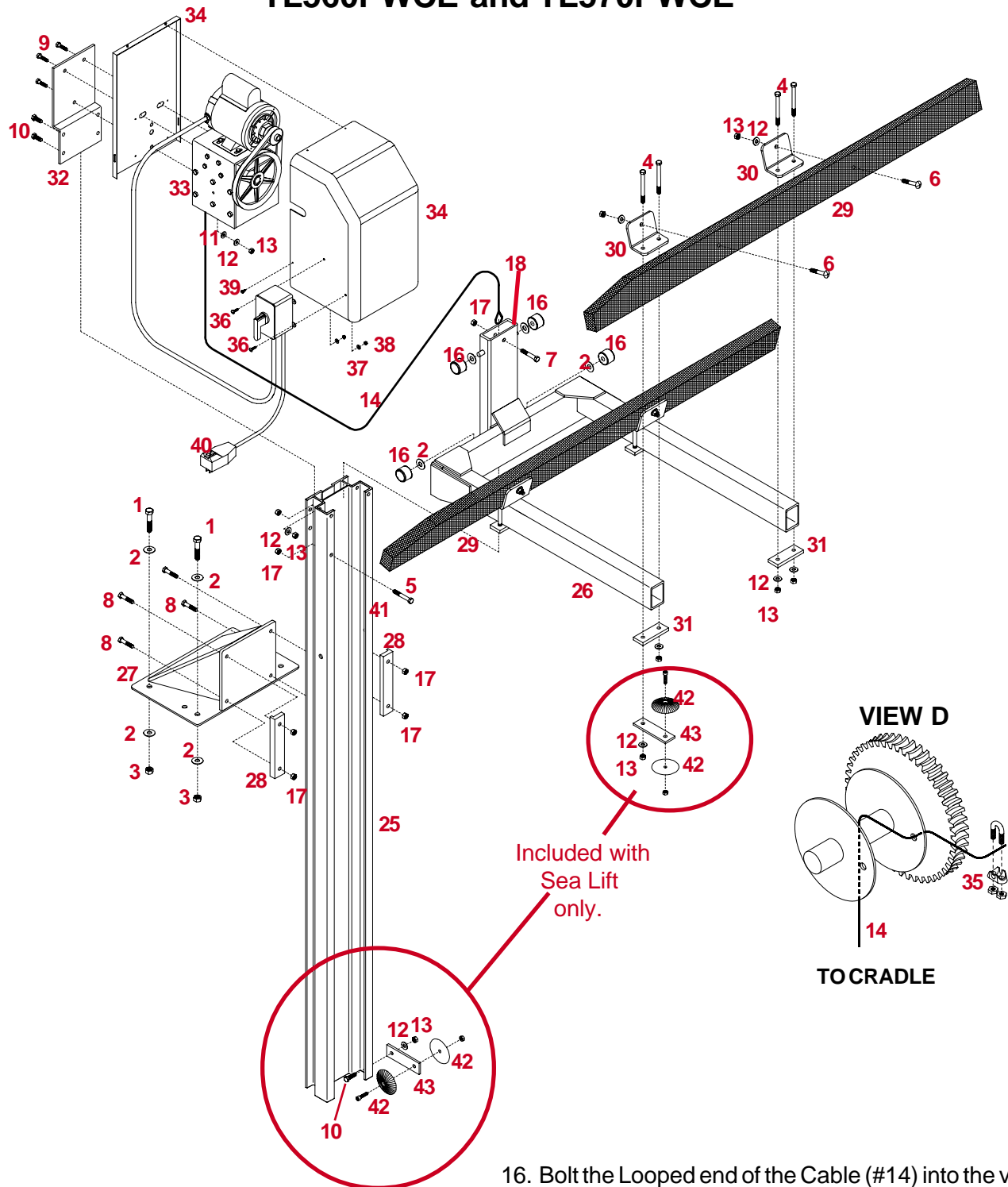
The other 3/8" SS bolt is inserted into hole (D) of the Winch Cover, through the first hole of the upright Post, then through the thimble of the Cable and then through the back hole of the Upright Post, secure with 3/8" SS nylon locknut (#17) **See View C.**

9. Mount the Winch Hand Wheel (#20) to the Winch (#19) using the nut and spring furnished with winch.
10. Attach one more 3/8" x 2-3/4" SS bolt (#5), and nylon locknut (#17) in upright leg to serve as a stop. **Do not overtighten.**
11. Attach the four Bunk Board Mounting Angles (#30) to the Cradle (#26) using four Board Mounting Plates (#31), eight 3/8" x 4-1/2" SS hex head bolts (#4), 3/8" SS lockwashers (#12), and 3/8" SS hex nuts (#13). Attach so the top of the Bunk Boards face inward. **DO NOT TIGHTEN NUTS AT THIS TIME TO ALLOW FOR ADJUSTMENT.**
12. Mount the Carpeted Cradle Boards (#29) to the Bunk Board Mounting Angles (#30) using four 3/8" x 2-1/2" SS carriage bolts (#6), 3/8" SS lockwasher (#12) and 3/8" SS hex nuts (#13).
13. Attach the Dock Plate (#27) to the lift assembly using two Dock Plate Backup Plates (#28), four 3/8" x 1-3/4" SS hex head bolts (#8), and 3/8" SS nylon locknuts (#17).

DO NOT TIGHTEN NUTS AT THIS TIME.

7. Route cable through Sheave Block (#15) and attach to Winch (#19) as shown in the cable attachment diagram **View A or View B** depending on which hardware is furnished with the winch. Also, use the instructions furnished with the winch. The looped end of the cable is attached when the Winch Cover (#24) is installed.
8. The Winch Cover is attached by first inserting the slotted holes (B) of the cover between the bottom of the Winch Bracket (#23) and the top of the SS flat washer. Use two 3/8" x 2-3/4" SS hex head bolts (#5), and 3/8" SS nylon lock nuts (#17) to finish attaching the winch cover and hooking up the looped end of the cable. Insert one 3/8" x 2-3/4" SSbolt through the hole (C) in Winch Cover and into the Upright Post.

TL560PWCE and TL570PWCE



ELECTRIC WINCH ASSEMBLY INSTRUCTIONS

14. Attach Electric Winch Mount Bracket (#32) to Upright Lift Post using four 3/8" x 1" SS hex head bolts (#10), 3/8" SS lockwashers (#12) and 3/8" SS hex nuts (#13).
15. Bolt the Electric Winch (#33) to the Electric Winch Mount Bracket (#32) using three 3/8" x 1-1/4" SS hex head bolts (#9), three SS flatwashers (#11), three SS lockwashers (#12) and three SS hex nuts (#13). **Note:** Make sure the SS Shield Backplate (#34) is located between the Electric Winch Mount Bracket and the Electric Winch.

16. Bolt the Looped end of the Cable (#14) into the vertical tube of the Cradle (#26) using one 3/8" x 2" SS bolt (#7), and 3/8" SS nylon locknut (#17). Attach the cable to the Electric Winch (#33) as shown in the cable attachment diagram **View D** using the 3/16" cable clamp (#35).
17. Bolt the winch switch to either side of the Electric Winch Cover (#34) using two #10 x 3/4" screws (#36), #10 washer (#37), and #10 nut (#38).
18. Attach the Electric Winch Cover (#34) using two #8 screws (#39) that are furnished with the Electric Winch Cover Assembly. **Note:** Return to step #10 on page 12.

INSTALLATION INSTRUCTIONS



Warning: To Prevent Personal Injury

Your electric Dockside Lil'Lifter must be wired according to the National Electrical Code, specifically Article 555-3, which states that the boat hoist must be protected by a ground-fault circuit interrupter located at the shore power. Also the hoist must be grounded according to article 555-7.

Consult a licensed electrician to make sure that your hoist is wired according to local and national electrical codes.

1. Begin by measuring the distance from the top of the dock to the surface of the water.
2. Position the Dock Plate (#27) in the correct position on the Upright Post (#25) so the watercraft can freely be removed in the lowered position and so the watercraft is safely out of the water in the raised position. Tighten 3/8" nuts.
3. Mount the dock plate (#27) to dock in desired position using four 1/2" x 2-1/2" SS hex head bolts (#1), eight 1/2" SS flatwashers (#2), and four 1/2" SS hex nuts (#3).

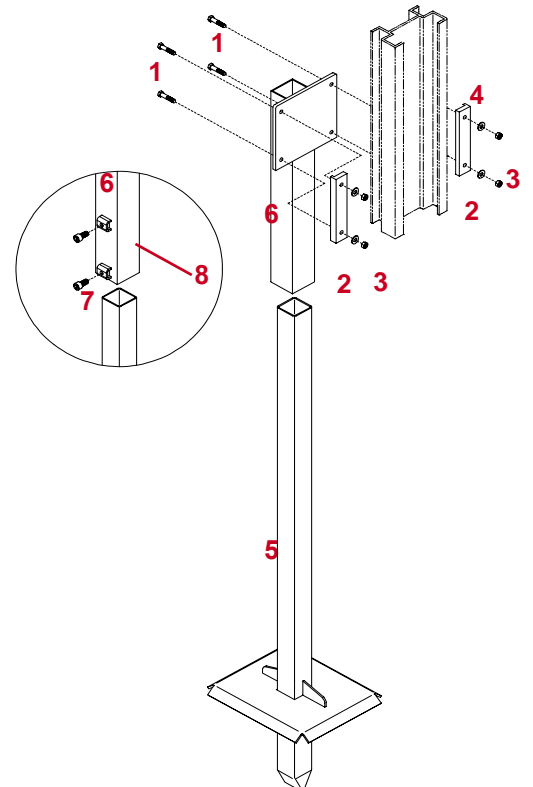
4. Lower the cradle of the hoist into the water just enough to allow the PWC to float on the cradle.
5. Guide the PWC into the Bunk Mounts and center it.
6. Raise the cradle so the PWC just starts to lift and adjust the PWC Bunk Mounts according to the PWC. After final adjustments are made, make sure all fasteners are tight.
7. After making sure no damage will result to either the PWC or the hoist, lift the PWC from the water.

CRADLE SETTINGS

When the PWC is on the cradle boards the boards should be approximately 18" to 24" out of the water under calm conditions, 30" out of the water under windy conditions. For example, if your PWC is located on an open shore line, the cradle should be set at a height of 30" above the water. If it is located in a sheltered cove it can be set at the 18" to 24" level.

OPTIONAL SUPPORT LEG (TLFP)

1. If the hoist is installed on a removable dock which will not support the hoist, an optional foot is available.
2. Locate the approximate position for the support leg(#5) and push it into the bottom of the lake. Then slide the adjustable extension leg(#6) over the support leg.
3. Slide two 1/2" square nuts(#8) under hold downs on the adjustable extension leg. Then use two 1/2" set screws(#7) to turn into the nuts. Adjust the adjustable extension leg to the correct height and tighten the set screws.
4. Attach the adjustable extension leg (#5) to the hoist using two Dock Plate Backup Plates (#4), four 3/8" x 1-3/4" SS hex head bolts (#1), 3/8" SS lockwashers (#2), and 3/8" SS hex nuts (#3).
5. The bolts that hold the Dock Plate to the Upright Post should remain loose to allow for the movement in the dock when the Optional Support Leg is used.



REF. NO.	PART NO.	QTY	DESCRIPTION
1.	06490	4	3/8"-16 UNC x 1-3/4" Hex Head Bolt - SS
2.	06328	4	3/8" Lockwasher - SS
3.	06491	4	3/8"-16 UNC Hex Nut- SS
4.	06689	2	Back-Up Plate
5.	06705	1	Support Leg
6.	08215	1	Adjustable Leg Extension
7.	06115	2	1/2"-13 UNC x 1 1/2" Sq. Head Set Screw - SS
8.	WN120	2	1/2"-13 UNC Square Nut

NOTES:

DO NOT OPERATE THIS HOIST WITHOUT FIRST STUDYING YOUR OWNER'S MANUAL.



SAFETY FIRST

This hoist is not a toy, but a piece of equipment that deserves your respect.

Before allowing anyone to operate the unit, be sure they read and understand the proper operating procedure.

DO NOT EXCEED maximum capacity (750 lbs) of unit. Overloading of the hoist may cause mechanical failure and serious personal injury.

All persons should stand clear of hoist and not be allowed to board your watercraft when it is being raised or lowered.

If you choose to inspect or to work on the winch be sure the platform is completely lowered.
NEVER PLACE HAND INSIDE THE SHIELD.

Children or adults should be restricted from playing on or near the hoist.

All persons should be off the watercraft and/or hoist before operating the hoist.

If you have a hoist without a canopy, be sure to pull the drain plug in the watercraft before leaving for any length of time. A rain storm could push your gross weight over the hoist capacity.

Service the hand winch according to specifications located in the hand winch manual.

IMPORTANT: A winch maintenance schedule must be followed to avoid possible failure and injury.

When the hoist is in the up position and the hoist is unattended, the electric power should be turned off to the hoist.

Check cable for wear or fraying and also stress on cable attaching ends. If this occurs, replace cable immediately.

Be sure hoist is installed level. Out-of level installation could cause hoist hangup and serious personal injury.

Do not work on your watercraft or hoist with the watercraft on the hoist.

Check the sheave to make sure it is turning and operating properly. Lubricate periodically.

Service the Electric Motor and Winch regularly.

IMPORTANT: A Motor and Winch maintenance schedule must be followed to avoid possible failure and injury.

